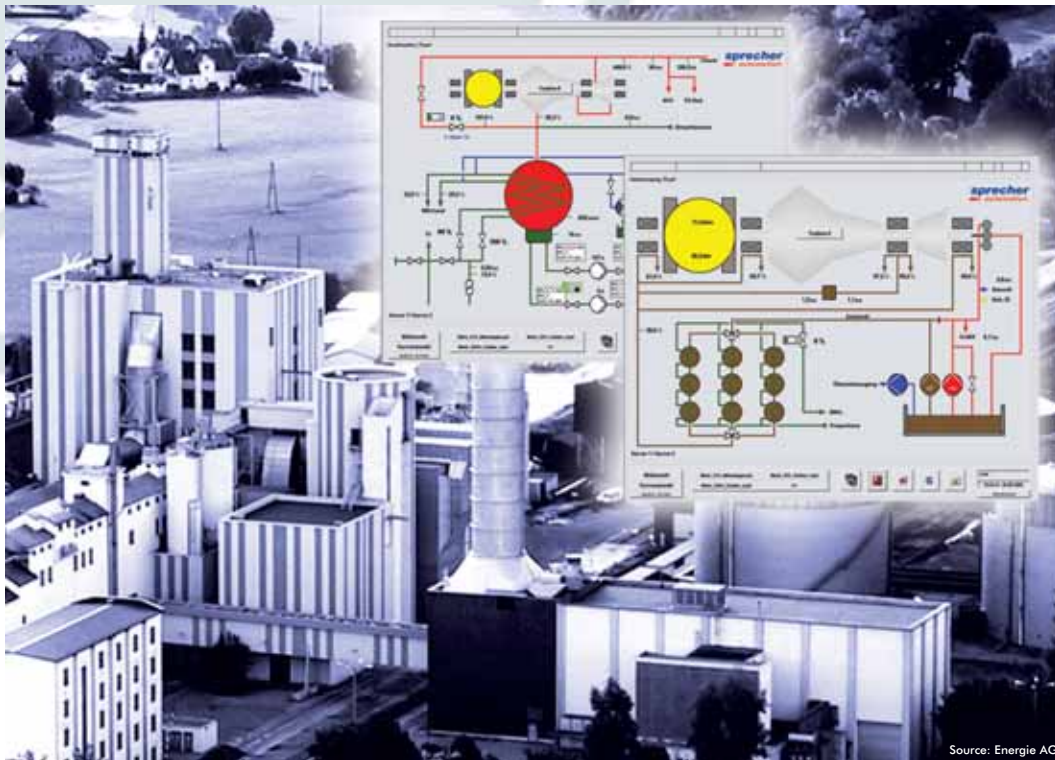




© Sprecher Automation 2003

MODERN HMI SYSTEMS WITH SPRECON[®]-V APPLICATIONS

RENEWAL OF THE OPERATOR CONTROL AND MONITORING LEVEL OF A CALORIC POWER PLANT

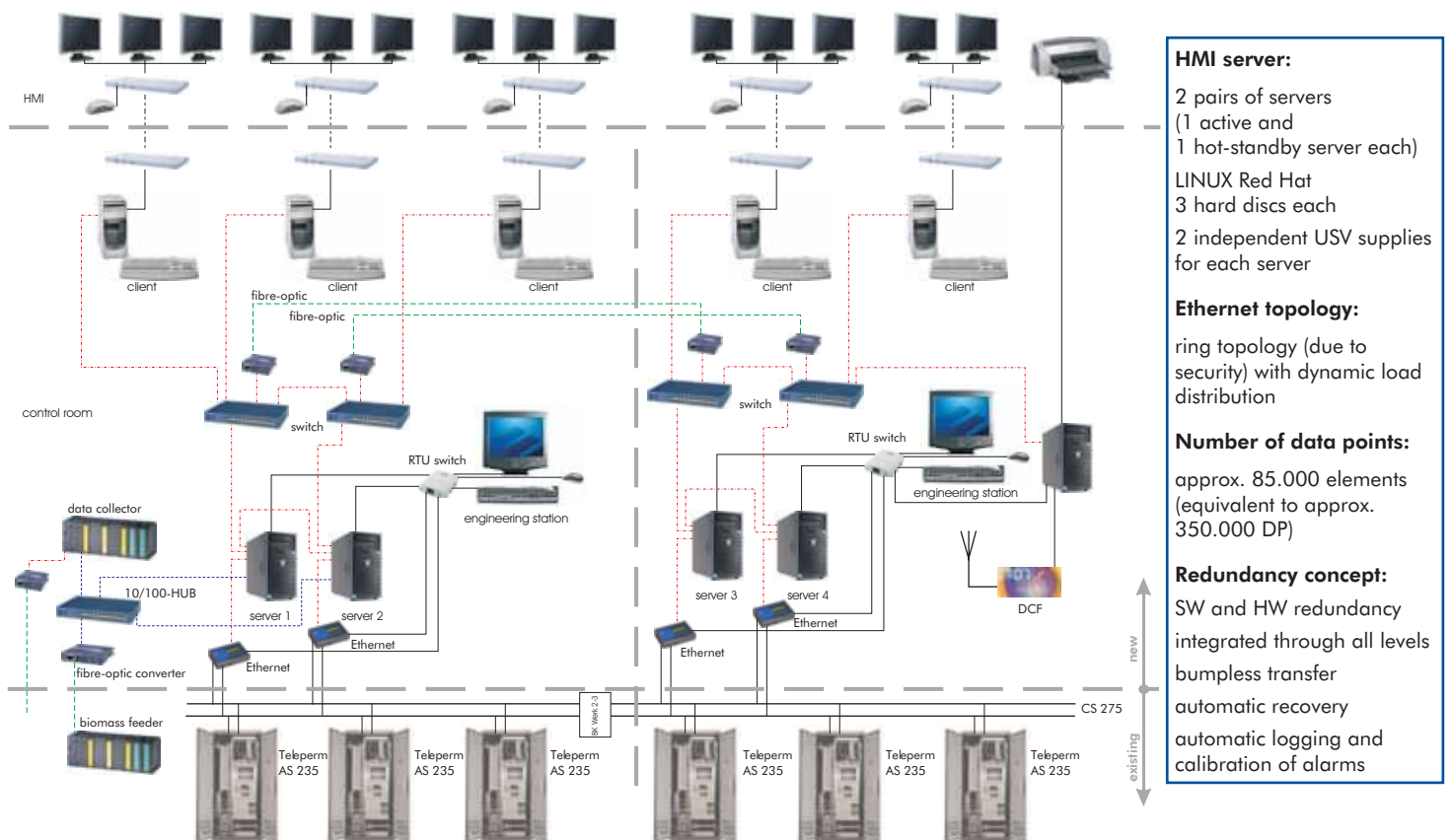


MODERN HMI SYSTEMS WITH SPRECON®-V APPLICATIONS

RENEWAL OF THE OPERATOR CONTROL AND MONITORING LEVEL IN A CALORIC POWER PLANT

Beside other features, modern control systems provide comprehensive functionality and comfortable engineering and maintenance tools in consideration of ergonomic aspects. The integrated operator control and monitoring systems (HMI) of former installed process control technology do not meet these demands anymore. Whereas I/O hardware in process environment is still acceptable and also available at the market, hardware and software modules have a short life cycle. Consequently, a required modernisation of the operator control and monitoring level can mostly be achieved by replacement of the whole process control system only. Therefore, this also involves the replacement of the I/O hardware in process environment which may still be sound.

With SPRECON®-V, Sprecher Automation provides a solution which allows the replacement of older process visualisation systems by maintaining the existing control hardware. In this particular application, the obsolete operator control and monitoring system of a caloric power plant was replaced by a modern and considerably more efficient Sprecher system. Integration of the existing control hardware is achieved through an intelligent gateway which easily integrates various proprietary data structures into SPRECON®-V. Power plant control and monitoring is now carried out with 14 TFTs, a redundant "hot-standby" server/client structure and LINUX as the operating system.



© Sprecher Automation 2003. Our policy is one of continuous development and the right is reserved to supply equipment which may vary from that described.